



# Cockpit viewer



Visualisation & planning



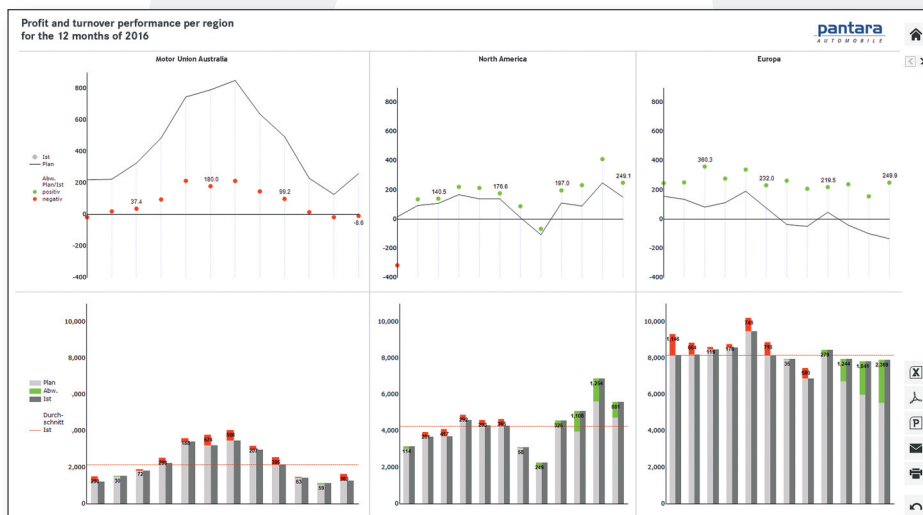
Distribution

## The viewer frontend in the Cubeware Solutions Platform C8

- Simple display of Cockpit reports (incl. filter change)
- Navigation (expand, rollup, drilldown, ...)
- Back to basic selection (e.g. after container use)
- Ad hoc export (Excel, PDF, HTML, XML, ...)
- Print

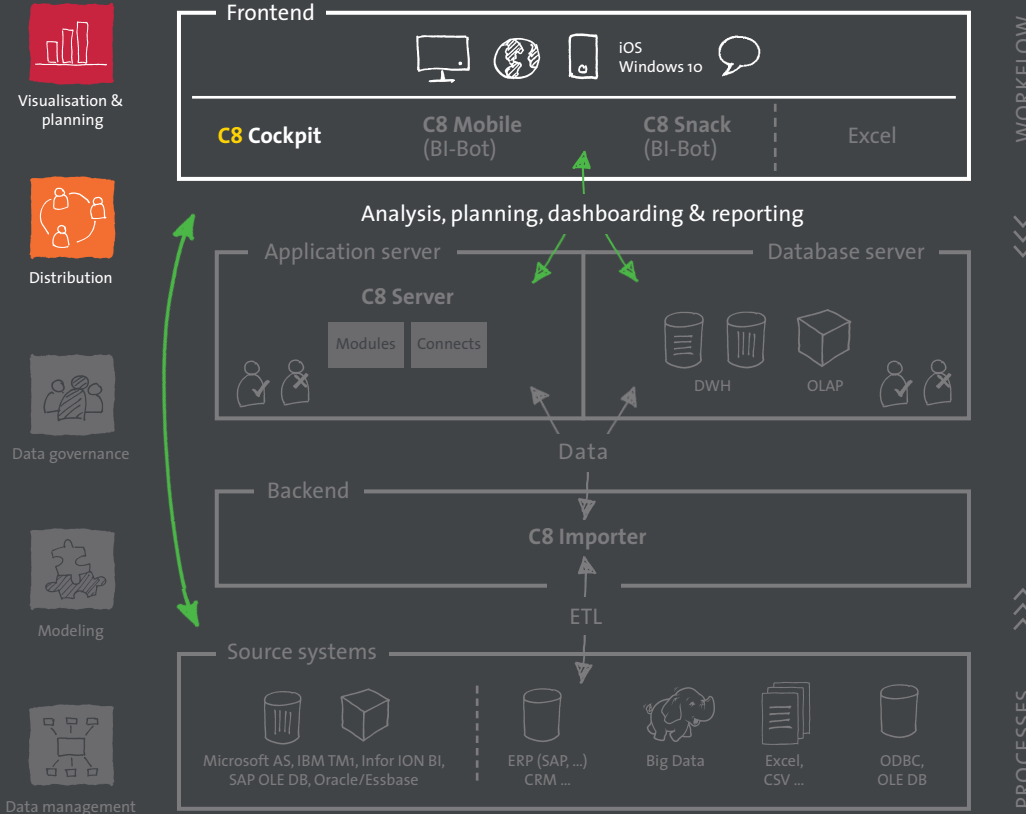
### Key limitation

- No data input into tables
- No ad hoc analysis functionality (rotate, keep, hide, ...)
- No report design
- No planning



# CSP C8

## Scalable BI solutions for all requirements!



Our powerful BI platform CSP C8 adapts flexibly to your requirements and source systems:

→ **C8 Cockpit / Consumer / Viewer**  
Frontend for all user types

→ **C8 Mobile / Consumer / Viewer**  
Native mobile app for iOS and Windows 10

→ **C8 Snack**  
Report usage via messenger or C8 Mobile

→ **C8 Server**  
Core application server

■ **Editions**  
Load-handling capacity and functionality to match your BI application

■ **Modules** (edition-dependent)  
Plan, export, maps

■ **Connects** (edition-dependent)  
Database connection (SAP/RDBMS/OLAP)

→ **C8 Importer**  
Power ETL tool

Cubeware partners:

Cubeware helps you consolidate all of your relevant data and information and make it available any time – online or offline – to as many users as possible and in the format they need for decision-making. For management staff and process owners. Over 4,000 customers have entrusted their projects to Cubeware. Read about their many successes for yourself by visiting [us.cubeware.com/success-stories](http://us.cubeware.com/success-stories)

*Make decisions!*